

Manual for

THE BAT PREAMP

CAREFULLY READ THIS MANUAL BEFORE USING THE DEVICE! THE MANUAL IS PART OF THE DEVICE. IT CONTAINS IMPORTANT INFORMATIONS FOR OPERATION AND USAGE.

- Do never expose the device to rain or humidity. This will cause damage to the device.
- Repairs need to be done by qualified technicians only.
- Do not manipulate any jacks
- Do always shut off the device completely before cleaning. Wait till it is completely dry before connecting it to the power supply.



This device conforms EMC 89/336/EEC and LV 73/23/EEC

Assembled in Germany by

Tines & Reeds

ELECTRIC PIANO COMPANY

Christian Radtke
Bahnhofstr. 41
Werkstatt im Hinterhof
27383 Scheeßel
Tel.: 04263 912 17 87
Mobil: 0172 5496901
E-Mail: info@tinesandreeds.com
Web: <https://www.tinesandreeds.com>

CONCEPT & USAGE

THE BAT is a modern battery powered preamp with optical stereo tremolo.

THE BAT can be installed in any Rhodes piano without modifications: Mark I, Mark II, Mark V. Install, plug and play. A new faceplate (Mark I) is included.

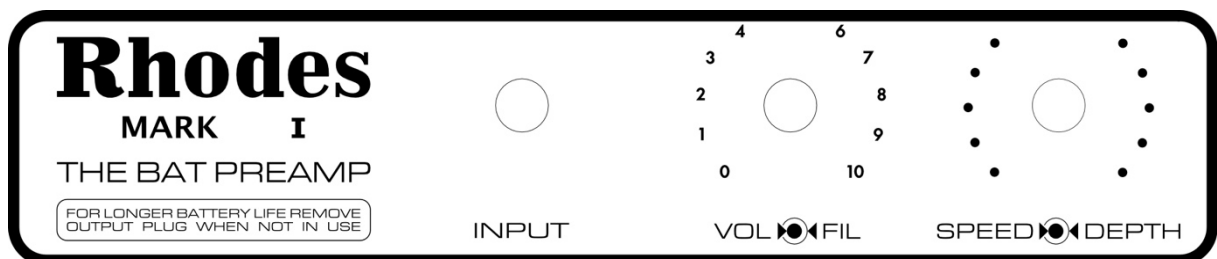
The controls at the front allow you to change speed and depth of this fabulous stereo tremolo. Furthermore you have access to a lowpass filter which gives you the whole range of sounds from the 60s to 80s.

On the PCB there are some more features. There is an equalizer with controls for treble and bass. Its already perfectly adjusted. Anyway: Feel free to play with it.

There is a pinheader which sets the waveform which is used for the modulation engine. You can choose between square wave resulting in a ping-pong tremolo and sine wave which gives you a huge stereo panorama especially at low depth settings.

THE BAT is powered through a 9V battery. For the sake of the environment we strongly recommend using a DC power supply though especially in a studio environment. It is not included by default but you can add it in the options.

FUNCTIONS



INPUT:

Audio output. Traditionally labeled "Input".

This is a stereo-jack. Please use a appropriate cable to get access to both channels (stereo-plug=> 2x mono-plug). If no plug is inserted, the preamp shuts off.

VOL / FIL:

Double potentiometer.

The inner knob changes the volume.

The outer knob sets the low pass filter. The filter-potentiometer is the most powerful tool of **THE BAT**. If you turn it fully clockwise it doesn't affect the sound at all. You will get the crystal clear sound from the early 80s. By turning the knob and set it to 8 - 10, the high frequencies will be cut steep. If you turn it even further, it'll create a Wah-effect.

SPEED / DEPTH:

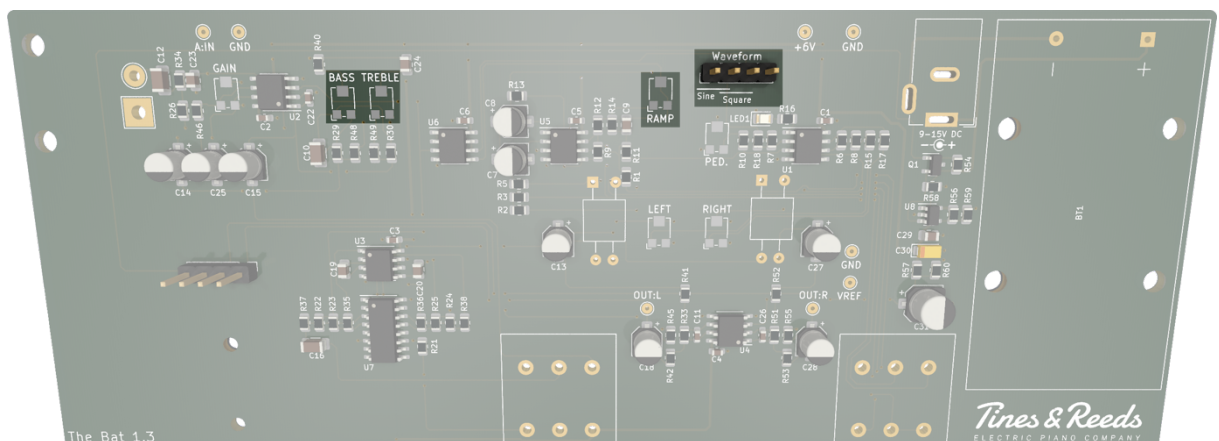
Double potentiometer.

The inner knob sets the speed of the tremolo.

The outer knob sets the depth of the modulation

ADDITIONAL FUNCTIONS PCB

On the PCB you'll find some more features:



BASS & TREBLE:

On the left side you'll find two potentiometers which you can use to boost or cut the low and the high frequencies. We have set them already but you are free to experiment. Use a small and flat screwdriver.

RAMP:

In the mid you'll find another potentiometer labeled RAMP. This allows you to adjust the slope of the flank of the square wave modulation. You can make the ping-pong tremolo smoother or harder by turning this potentiometer.

WAVEFORM:

This pin header allows you to change the modulation waveform. You can choose between sine wave and square wave modulation.

WHAT IF MY PREAMP DISTORTS?

In the top left corner you'll find a potentiometer labeled with "Gain". Turn it counter clockwise using a small flat screwdriver till the sound is clean.

TECHNICAL INFORMATIONS:

Input impedance: ca. 1M Ω

Output impedance: ca. 100 Ω

Power supply: 9V Battery or external power supply 9-15V